

# Leica Roteo 35G

## The All-in-one rotating laser with a green beam



### All-round **perfection** in every condition

On ceilings or walls, on the floor or on a tripod, the Leica Roteo 35G rotating laser is a multi-talented performer. You can use it to work precisely on many indoor tasks in which leveling or aligning is required in very bright conditions and over very long distances.

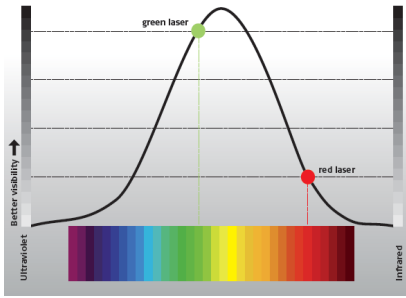
#### Featured with

- Fully automatic horizontal and vertical laser
- Motorized wall mount
- Removable protective cage
- Scan mode
- 90° plumb beam
- Outstanding battery life for working without interruption

 **Best visibility**  
**Green Laser**

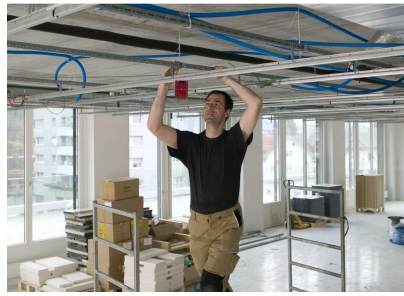
- when it has to be **right**

**Leica**  
**Geosystems**



### 400% visibility

The Leica Roteo 35G has all the characteristics of the Leica Roteo 35. In addition, it has a green laser beam. The pioneering green laser beam is four times more visible to the human eye. So you have the best possible visibility.



### Installing ceilings and walls

With its motorized wall mount, the Leica Roteo 35G can be positioned on the wall and moved effortlessly backwards and forwards using the combined remote control/detector unit, allowing you to quickly suspend ceilings and erect drywalls.



### Marking out right angles

The Leica Roteo 35G is also a great help in the vertical plane. The combination of a vertical 360° reference plane and plumb beam simplifies layout, allowing you to work more accurately and efficiently on interior works.

### Leica Roteo 35G Packages

Art.No. 772787

- Leica Roteo 35G rotating laser
- Motorized wall mount
- RRC350G combined remote control/detector unit with clamp
- 9V-Battery for the combined unit
- Battery holder for alkaline batteries
- Rechargeable NiMH battery pack
- International charger
- Green target plate
- Green laser glasses



### Technical Specifications

Leica Roteo 35G	
Operating range (rotating beam)	up to 150 m (500 ft) radius with laser receiver
Self-leveling accuracy	± 3 mm at 30 m (± 1/8" at 100 ft)
Automatic self-leveling laser	horizontally vertically
Self-leveling range	± 4.5°
Rotating speed	variable (5-settings)
Battery types	D-cell (mono), 2 x 1.5 V or rechargeable battery pack
Battery life	25 hours (rechargeable), up to 40 hours (alkaline batteries)
Protection class	IP 54, dust- and splash-proof

Laser class 3R in accordance with IEC 60825-1 and EN 60825-1

### Recommended original accessories

CLR290 Clamp Rod\*

Art. No. 761762



\* Not available in the USA

CTP106 Aluminium Tripod

Art. No. 767712



CET103 Crank-head tripod

Art. No. 768033



CTP104D Aluminium Tripod

Art. No. 776711



Illustrations, descriptions and technical specifications are not binding and may change. Copyright© Leica Geosystems AG, Heerbrugg, Switzerland, 2009.

Leica Geosystems AG  
Heerbrugg, Switzerland  
[www.leica-geosystems.com](http://www.leica-geosystems.com)

- when it has to be **right**



■ Authorized **Leica Geosystems** Distributor