



VIVAX
METROTECH

vCam Inspection Products



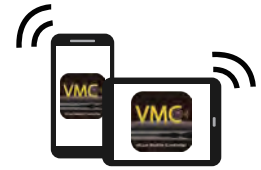
The clear choice for video inspection

www.vxmt.com | www.vivax-metrotech.com



vCamDrain Wireless Reel

The vCamDrain camera system features a wireless Wi-Fi reel controlled by the vCam Mobile Controller (VMC) app. When connected to the reel by Wi-Fi, the VMC app controls the reels camera lights, distance counter reset, sonde, text writer and audio commenting.



Recordings can be saved to the VMC app and instantly shared by the mobile devices file sharing options. Recordings can also be saved to the reels USB port or saved simultaneously to the app.



- Instantly share files
- Inspect lines from 1.5" to 3"
- Navigate p-trap and toilet traps

The tough ABS construction reel holds 70 or 100 feet of 9mm ultra-flex pushrod. The pushrods balance of flexibility and pushing strength is usable in lines from 1.5 to 3 inches. The drag-resistant pushrod jacketing allows it to navigate multiple bends, tight turns, p-traps, and toilet traps.

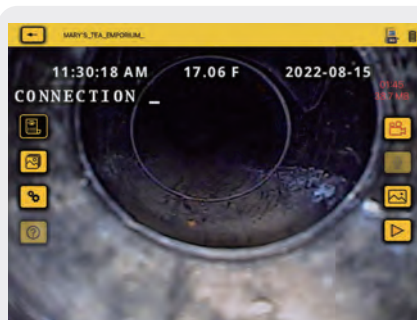
The vCamDrain comes with a stainless-steel 18mm diameter HD camera with a sapphire lens and ultra-bright LEDs. An optional 20mm HD self-leveling camera is available. Both cameras will produce a crisp, clear image of the pipe's interior.

The reel is powered by internal li-ion batteries providing consistent, clean long-life power.

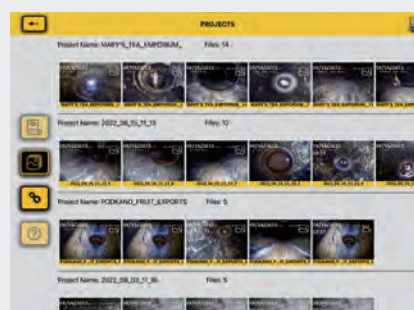


vCam Mobile Controller App

The vCam Mobile Controller (VMC) App is also compatible with the vCamMX-2 and vCam-6 control modules. The video stream from these units is captured and recorded to the VMC app. Videos and pictures can quickly be shared using the mobile devices native sharing options. The files created in the app are stored in Projects folders in the searchable app gallery for easy management.



Stream video from the vCamMX-2 and vCam-6



The gallery organizes the videos and pictures



Easily share files via the mobile devices' options

- Record video in HD quality on the mobile device
- Add text and audio comments to the recording video
- Instantly share pictures and videos while on the job site
- Share via the iOS or Android sharing features and file-share apps

Download the free vCam Mobile Controller app from the Apple or Google Play stores.



vCamMX-2 Mini Camera System

The vCamMX-2 is a portable all-in-one mini-class inspection system to inspect pipes between 2 and 4 inches in diameter. The system records in mp4 video format and takes pictures in JPEG format directly to a USB thumb drive, instantly backed up to an SD card. The internal microphone allows for audio commenting over the recording video.



Internal microphone for audio commenting over recording videos

8" daylight viewable display

Automatic backup of videos and pictures to SD Card

Locatable three frequency sonde and traceable pushrod

Field serviceable spring assembly

Lightweight durable carbon fiber pushrod drum

WIFI - 30' / 10m Range



Video out through RCA composite socket
Export distance out and video through Mini-USB port

Large keypad usable while wearing gloves

Internal rechargeable battery provides seven-hours of battery life

Choice of two interchangeable camera heads



D20-HD 0.78" / 20mm self-leveling camera



D26-HDR 1" / 26mm self-leveling camera

Optional 0.70"/18mm Camera



D18-HD 0.70"/18mm non-leveling camera

The three frequency sonde comes as standard equipment. A total of three user-changeable camera heads are available for the reel. The below table shows their size and range.

Use the free vCam Mobile Controller App to share video and image files via your mobile device and to add text and audio comments to the recording video and JPEG images.

	Mini Type-MX Reel Cameras		
Camera Model:			
Model:	D26-HDR	D20-HD	D18-HD
Dimensions:	1.02"/26mm diameter	0.79"/20mm diameter	0.73"/18.6mm diameter
Pipe Range:	2"/50mm to 4"/101mm	1.5"/38mm to 4"/101mm	1.5"/38mm to 3"/75mm
Self-leveling:	Yes	Yes	No
Construction:	Stainless-steel housing with scratch-resistant Sapphire lens		
Warranty:	1 year standard warranty/Camera exchange program is available		

All-in-one - Compact - Portable



Multiple viewing angles



Locatable pushrod and sonde



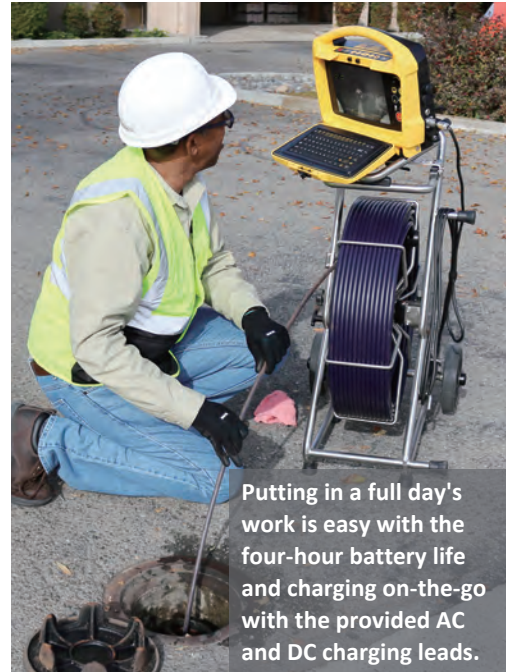
Compact and portable design

vCam-6 HD Inspection Camera System

The feature-rich vCam-6 HD inspection camera system increases productivity and profitability. Built tough and reliable for everyday use, the versatile vCam-6 is a good fit for plumbers, contractors, home inspectors, building maintenance supervisors, or anyone looking to inspect the interior of a pipe or duct.

Create crisp, detailed HD video inspections with audio comments, text descriptions, footage, date, and timestamps to submit to your customers without worry.

Designed for ease of use and dependability, the vCam-6 ensures trouble-free operation with little downtime. The vCam-6 control module is compatible with the vCam Mobile Controller App and the Type-CP Reel and the Type-MX Mini Reel.



Putting in a full day's work is easy with the four-hour battery life and charging on-the-go with the provided AC and DC charging leads.



- 1080p HD resolution
- 9.7"/24cm LCD
- 1 TB Hard drive
- AC/DC operation
- Three frequency sonde
- Internal microphone
- Wi-fi and custom app








TYPE-CP "STANDARD" REEL

- Wide enough profile to roll without rocking and tipping and slim enough for doorways and stairways.
- The all-stainless-steel construction reel is available with 200'/60M, 300'/90M or 400'/120M lengths of standard-size pushrod.
- Three frequency sonde and traceable pushrod.



TYPE-MX MINI REEL

- Small enough profile for use in confined areas or rooftops.
- Stainless steel and carbon fiber construction.
- Available in 100'/30M or 150'/45M of mini pushrod.
- Three frequency sonde and traceable pushrod.




	Standard Type-CP Reel HD Cameras		Mini Type-MX Reel Cameras		
Camera Model:					
Model:	D34-HD	D46-HD	D26-HDR	D20-HD	D18-HD
Dimensions:	1.3"/34mm diameter	1.8"/46mm diameter	1.02"/26mm diameter	0.79"/20mm diameter	0.73"/18.6mm diameter
Pipe Range:	3"/76mm to 6"/152mm	4"/101mm to 8"/203mm	2"/50mm to 4"/101mm	1.5"/38mm to 4"/101mm	1.5"/38mm to 3"/75mm
Self-leveling:	Yes	Yes	Yes	Yes	No
Construction:	Stainless-steel housing with scratch-resistant Sapphire lens				
Warranty:	1 year standard warranty/Camera exchange program is available				

Residential, industrial, and municipal applications



vLoc3-Cam Sonde and Camera Locator

The vLoc3-Cam Sonde and Camera Locator is a quick and accurate way to locate sondes. The Omnidirectional antenna array allows for approaching the sonde from any position. The directional arrows will guide the user first to the front or rear locate point and then directly to the sondes' position and read out the depth of cover to the sonde.

The vLoc3-Cam Sonde Locators advanced filtering and omnidirectional antenna technology makes sonde locating fast, easy, and accurate. Follow the arrow  to the rear locate point  then continue to the sonde .



- Graphical color display
- Pushrod trace mode
- Utility trace mode
- Damage avoidance modes
- Optional Bluetooth connectivity



vLoc3-Cam



Optional Transmitter



Pushrod Trace mode - Locate the pushrod or buried utilities

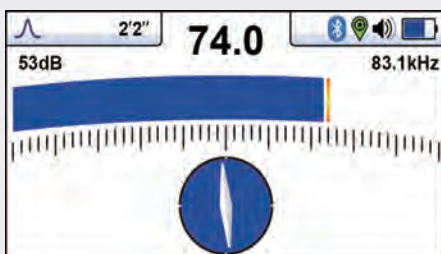


Directional arrows point to the sonde location



When directly over the sonde the arrow turns into a sonde icon

Multiple sonde frequencies make it compatible with the market's major push and crawler cameras. The Pushrod Trace mode shows a second display geared for tracing the path of the pushrod deployed in the pipe or tracing pipes with an optional portable transmitter.



Vivax-Metrotech Ltd.

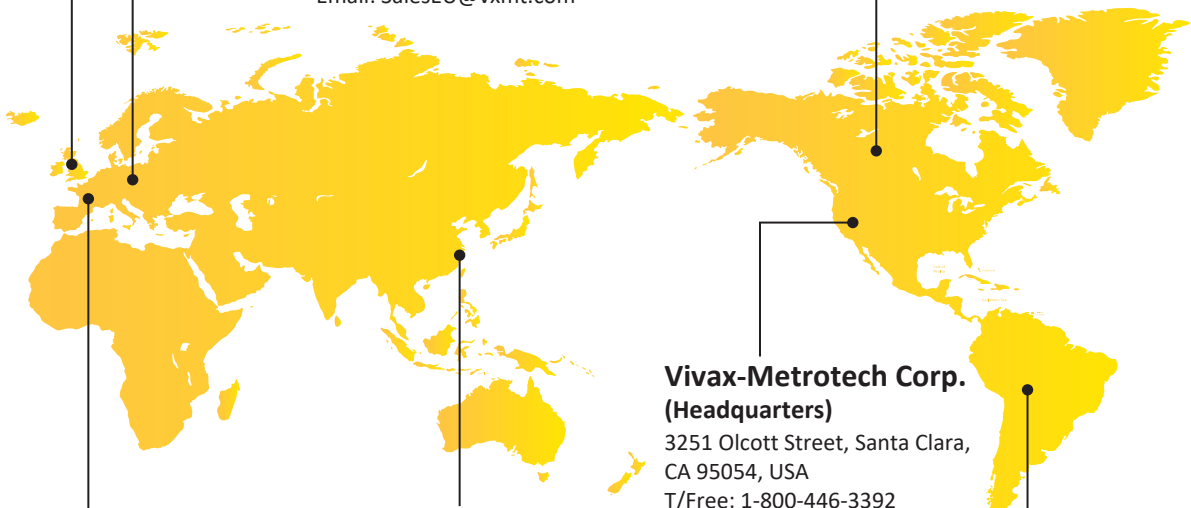
Unit 1, B/C Polden Business Centre, Bristol Road,
Bridgwater, Somerset, TA6 4AW, UK
Tel: +44(0)1793 822679
Email: SalesUK@vxmt.com

Vivax Canada Inc.

41 Courtland Ave Unit 8, Vaughan,
ON L4K 3T3, Canada
Tel: +1-289-846-3010
Fax: +1-905-752-0214
Email: SalesCA@vxmt.com

Metrotech Vertriebs GmbH

Am steinernen Kreuz 10a,
96110 Schesslitz, Germany
Tel: +49 9542 77227-43
Email: SalesEU@vxmt.com



Vivax-Metrotech (Shanghai) Ltd.

3/F No.90, Lane 1122 Qinzhou Rd.(N),
Shanghai, China 200233
Tel: +86-21-5109-9980
Fax: +86-21-2281-9562
Email: SalesCN@vxmt.com.cn

Vivax-Metrotech Corp. (Headquarters)

3251 Olcott Street, Santa Clara,
CA 95054, USA
T/Free: 1-800-446-3392
Phone: +1-408-734-1400
Fax: +1-408-734-1415
Email: SalesUSA@vxmt.com

Vivax-Metrotech SAS

Technoparc - 1 allée du Moulin Berger,
69130 Ecully, France
Tel: +33 (0)472 53 03 03
Fax: +33 (0)472 53 03 13
Email: SalesFR@vxmt.com

Ventas para América Latina

3251 Olcott Street, Santa Clara, CA 95054, USA
T/Free: 1-800-446-3392
Tel: +1-408-734-1400
Fax: +1-408-743-5597
Email: LatinSales@vxmt.com

Local Vivax-Metrotech Distributor:

Tag us on social media @vivax_metrotech



Disclaimer: Product and accessory specifications and availability is subject to change without prior notice.

V1.4 (Jul 2023)